

Checklist Summary

Hardware

- ✓ Intel® Pentium® III 933 MHz or higher (Recommended) Minimum Intel® Pentium® II 300 MHz
- ✓ 512 MB RAM or higher
- ✓ High Speed Internet Connection (Recommend 1 Mbps or greater)
- ✓ 1 GB Storage

Desktop Software

- ✓ Microsoft Windows® XP Service Pack 2
- ✓ Microsoft® Internet Explorer 6.01 or Microsoft® Internet Explorer 7.0
- ✓ Acrobat Reader
- ✓ Project Document Manager Client
- ✓ Data Dynamics Active Reports Viewer
- ✓ Sun Java 2 Runtime (1.4.2)
- ✓ Microsoft .NET Framework Version 1.1 Redistributable Package
- ✓ Microsoft .NET Framework 3.5 Service Pack 1
- ✓ Microsoft® Office 2003 or Office 2007 Professional Edition
- ✓ Microsoft Office 2003 / or 2007 Redistributable Primary Interop Assemblies Redistributable Primary Interop Assemblies*
- ✓ Microsoft Web Services Enhancements 2.0 Service Pack 3*
- ✓ Visual Studio 2005 Tools for Office Second Addition Runtime (VSTOR)*

* Required if using the ePM Office Business Applications or Desktop Quick Applications

Administrative Rights

Note: you must have administrative rights to your desk top computer or be able to perform the following:

- Open the following registries
 - HKEY_CLASSES_ROOT\PDM
 - HKEY_CLASSES_ROOT\LMC

Internet Explorer Settings

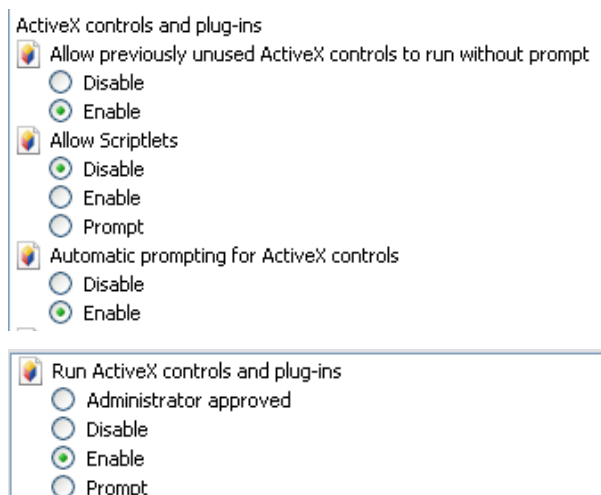
The following settings are required in Internet Explorer. The instructions below assume IE 7. If you are using another version of IE or another browser, please set accordingly.

ePM set in trusted sites zone

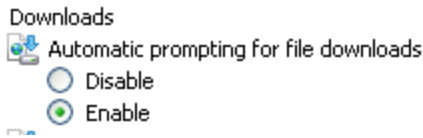
1. In Internet Explorer, choose Tools > Internet Options.
The Internet Options dialog box appears.
2. Click the Security tab.
3. Select Trusted Sites > Sites.
The Trusted Sites dialog box appears.
4. Under Add this Web site to the zone, type
`https://epm.pbs.gsa.gov`
5. Select "Require server verification (https:) for all sites in this zone" checkbox.
6. Click Add.
7. Click OK and then OK again to close the Internet Options dialog box.

Set IE Custom Level

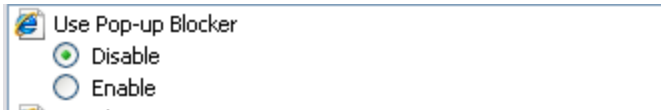
1. While the Trusted Sites zone is highlighted, click on Custom Level....
2. The Security Settings – Trusted Sites Zone box will appear. Scroll through the list to make the following selections.
3. ActiveX controls and plug-ins



4. Automatic prompting for downloads



5. Use Pop up Blocker



Turn off Internet Explorer's pop-up blocker

1. From Internet Explorer
2. Choose Tools > Pop-up Blocker > Turn Off Pop-up Blocker.

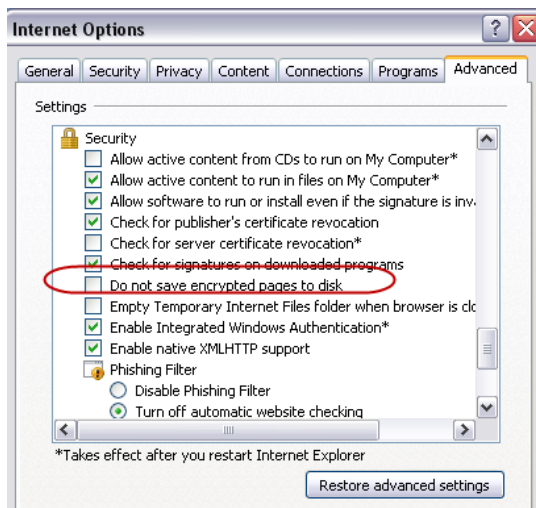
NOTE: If you have any third-party pop-up blockers enabled, these also need to be turned off.

Batch Upload of files

1. From Internet Explorer
2. Choose Tools > Internet Options .

The Internet Options dialog box appears.

3. Click the Advanced tab. Scroll down to the Security section and ensure that the “Do not save encrypted pages to disk” is clear (not checked)





Custom Print Layout Requirements

Custom Print Layouts can be created and run using both Microsoft Word 2003 and 2007 Professional editions. In Microsoft Word 2007, ensure that you save the file in Word 2003 .xml format.

You can view custom print layouts (CPLs) created with Microsoft Word 2003 Professional via the Microsoft Office Word Viewer 2003, a no-cost download from Microsoft. It enables users without Microsoft Word 2003 installed to view Word-based XML documents. CPLs accessed via this viewer will have the same format and content as if they were run on Microsoft Word 2003.

The viewer is available at the following download location:

<http://files.mps.com/GSA/Desktop/wordview.zip>

Java Runtime Requirements

ePM uses a Java applet within the Scheduling application. The Java applet requires the following component:

- Java 2 Runtime Environment (JRE) v1.4.2_12

You can obtain the JRE at:

http://files.mps.com/GSA/Desktop/JRE_142.zip

or

<http://java.sun.com/j2se/1.4.2/download.html>

Note: Java 6 will be fully supported in ePM 1.1.



Microsoft Runtime and Tools

ePM is built upon Microsoft .NET Framework and leverages Web Services. Microsoft .NET Framework 3.5 Service Pack 1 is a full cumulative update. In addition to the .NET Framework, to leverage the ePM Office Business Applications, additional tools are required

You will find the required download packages at the following location:

.NET Framework 1.1	http://files.mps.com/GSA/Desktop/NET1.1.zip
.NET Framework 3.5	http://files.mps.com/GSA/Desktop/NET3.5.zip
Web Services Enhancements	http://files.mps.com/GSA/Desktop/WSE2.0.zip
Primary Interop Assemblies (based upon applicable Office version)	http://files.mps.com/GSA/Desktop/Office2003_PIA.zip or http://files.mps.com/GSA/Desktop/Office2007_PIA.zip
Visual Studio Tools for Office	http://files.mps.com/GSA/Desktop/VSTOR.zip

Alternatively, you may follow the steps below to download directly from the Microsoft website at: www.microsoft.com.

Microsoft .NET Framework

Two versions of .NET framework are required to properly run the entire ePM solution. .NET Framework 1.1 is required as well as .NET 3.5.

1. When logged into the Microsoft website, search for “Microsoft .NET Framework Version 1.1 Redistributable Package”
2. Select to download and follow the prompts



Microsoft .NET Framework Version 1.1 Redistributable Package

Brief Description

The .NET Framework version 1.1 redistributable package includes everything you need to run applications developed using the .NET Framework.

On This Page

- ↓ [Quick Details](#)
- ↓ [System Requirements](#)
- ↓ [Additional Information](#)
- ↓ [What Others Are Downloading](#)
- ↓ [Overview](#)
- ↓ [Instructions](#)
- ↓ [Related Resources](#)
- ↓ [Related Downloads](#)

Download

Quick Details

File Name:	dotnetfx.exe
Version:	1.1
Date Published:	4/3/2003
Language:	English
Download Size:	23.1 MB
Estimated Download Time:	Dial-up (56K) 57 min

Change Language: English ▼ Change

3. When logged into the Microsoft website, search for “Microsoft .NET Framework 3.5 Service Pack 1”
4. Select to download and follow the prompts

Microsoft .NET Framework 3.5 Service Pack 1

Brief Description

Microsoft .NET Framework 3.5 Service Pack 1 is a full cumulative update that contains many new the .NET Framework 2.0 and .NET Framework 3.0 subcomponents.

On This Page

- ↓ [Quick Details](#)
- ↓ [System Requirements](#)
- ↓ [Additional Information](#)
- ↓ [What Others Are Downloading](#)
- ↓ [Overview](#)
- ↓ [Instructions](#)
- ↓ [Related Resources](#)

Download

Quick Details

File Name:	dotnetfx35setup.exe
Version:	SP1
Date Published:	11/18/2008
Language:	English
Download Size:	2.8 MB
Estimated Download Time:	Dial-up (56K) 7 min

Change Language: English ▼ Change

Web Services Enhancements

1. When logged into the Microsoft website, search for “Web Services Enhancements (WSE) 2.0 SP3 for Microsoft .NET”
2. Select to download and follow the prompts

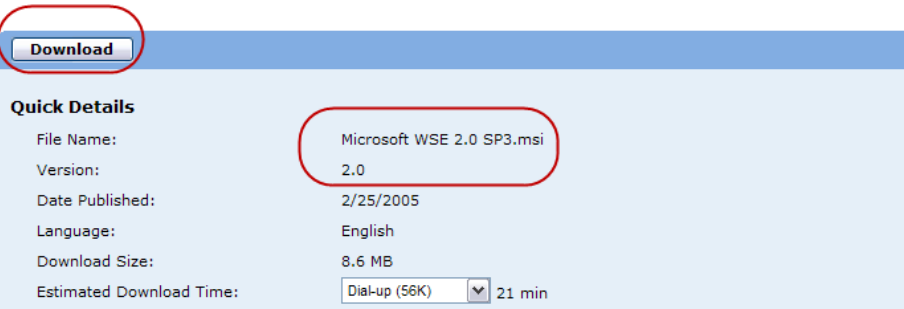
Web Services Enhancements (WSE) 2.0 SP3 for Microsoft .NET

Brief Description

Web Services Enhancements 2.0 SP3 for Microsoft® .NET (WSE) is a supported add-on to Microsoft Visual Studio® .NET and the Microsoft .NET Framework that enables developers to build secure Web services based on the latest Web services protocol specifications.

On This Page

- ↓ [Quick Details](#)
- ↓ [System Requirements](#)
- ↓ [Related Resources](#)
- ↓ [Overview](#)
- ↓ [Instructions](#)
- ↓ [What Others Are Downloading](#)



Download

Quick Details

File Name:	Microsoft WSE 2.0 SP3.msi
Version:	2.0
Date Published:	2/25/2005
Language:	English
Download Size:	8.6 MB
Estimated Download Time:	<input type="text" value="Dial-up (56K)"/> 21 min

Microsoft Office 2003 Primary Interop Assemblies

1. When logged into the Microsoft website, search for either “Office 2003 Update: Redistributable Primary Interop Assemblies” or “Office 2007 Update: Redistributable Primary Interop Assemblies” depending upon your version of Office.
2. Select to download and follow the prompts

Office 2003 Update: Redistributable Primary Interop Assemblies

Brief Description

The Office 2003 Primary Interop Assemblies (PIA) redistributable is a Microsoft Windows Installer package that contains the Primary Interop Assemblies for Microsoft Office 2003 products.

On This Page

- ↓ [Quick Details](#)
- ↓ [System Requirements](#)
- ↓ [Related Resources](#)
- ↓ [Overview](#)
- ↓ [Instructions](#)
- ↓ [What Others Are Downloading](#)

[Download](#)

Quick Details

File Name:	O2003PIA.EXE
Version:	1.0
Date Published:	4/18/2005
Language:	English
Download Size:	4.1 MB
Estimated Download Time:	T1 (1.5M) 1 min

2007 Microsoft Office System Update: Redistributable Primary Interop Assemblies

Brief Description

The 2007 Microsoft Office system Primary Interop Assemblies (PIA) redistributable is a Microsoft Windows Installer package that contains the Primary Interop Assemblies for 2007 Microsoft Office that system products.

On This Page

- ↓ [Quick Details](#)
- ↓ [System Requirements](#)
- ↓ [Related Resources](#)
- ↓ [Overview](#)
- ↓ [Instructions](#)
- ↓ [What Others Are Downloading](#)

[Download](#)

Quick Details

File Name:	PrimaryInteropAssembly.exe
Version:	1.0
Date Published:	11/9/2006
Language:	English
Download Size:	6.3 MB
Estimated Download Time:	Dial-up (56K) 16 min

Microsoft Visual Studio 2005 Tools for Office

1. When logged into the Microsoft website, search for either “Microsoft Visual Studio 2005 Tools for Office Second Edition Runtime (VSTO 2005 SE)”
2. Select to download and follow the prompts

Search All Downloads [Advanced Search](#)

Microsoft Visual Studio 2005 Tools for Office Second Edition Runtime (VSTO 2005 SE) (x86)

Brief Description
The Microsoft Visual Studio 2005 Tools for Office Second Edition (VSTO 2005 SE) redistributable package installs the Visual Studio Tools for Office runtime, which is required to run solutions built using VSTO 2005 or VSTO 2005 SE.

On This Page

- [Quick Details](#)
- [System Requirements](#)
- [Additional Information](#)
- [What Others Are Downloading](#)
- [Overview](#)
- [Instructions](#)
- [Related Resources](#)
- [Related Downloads](#)

Quick Details

File Name:	vstor.exe
Version:	1
Date Published:	11/5/2006
Language:	English
Download Size:	1.2 MB
Estimated Download Time:	<input type="text" value="Dial-up (56K)"/> 3 min

Change Language:

ActiveX Controls

ePM uses 3 ActiveX components to run and display various documents and reports. The user is prompted to download these plug-ins on initial use.

Note: Your Internet Explorer/browser settings must be set to allow for ActiveX downloads as specified in the above section. Any ActiveX installation built for Internet Explorer 7 and earlier requires users to have administrative privileges. With administrative privileges, the user will be prompted to download the ActiveX controls when first used.

Should the user not have administrative rights, the ActiveX plug-ins files may be installed and registered manually or through a group policy. Below are the steps to manually install the ActiveX files.

Active Report Viewer

The Active Reports Viewer ActiveX is published by Data Dynamics Ltd and needs to be installed on your computer to run or display a report through the Proliance Custom Viewer. Without this plug-in, the user can display reports in pdf.

The ActiveX control “cab” file for Active Reports Viewer can be found at:
<http://files.mps.com/GSA/Desktop/arview2.zip>

Within the “cab” file is the arview2.ocx.

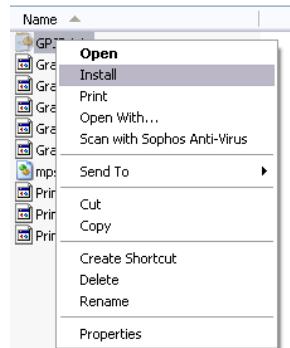
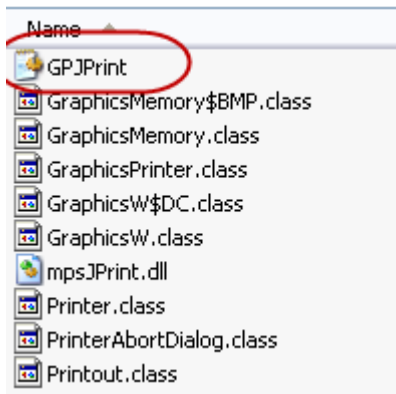
Copy the arview2.ocx to the C:\windows\system32 folder and then run regsvr32.exe to register it.
Example: c:\windows\system32\regsvr32 arview2.ocx

Scheduling Gantt Chart Print

ePM Scheduling uses an ActiveX plug-in to support printing of Gantt charts. The user will be prompted to download this plug-in on initial use. Alternatively, it may be installed manually.

The ActiveX plug-in can be found at: <http://files.mps.com/GSA/Desktop/GPJPrint.zip>

Extract the contents of the zip file to your local computer. Within the GPJPrint folder there is a file called GPJPrint. Right click on the file GPJPrint and then select “Install”.

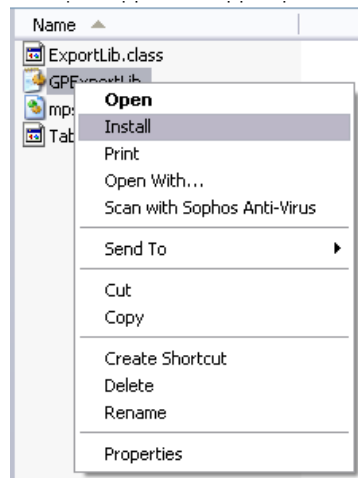
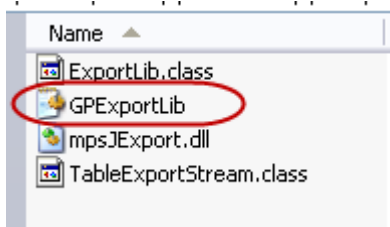


Scheduling Export

ePM Scheduling uses an ActiveX plug-in to support exporting of schedule data. The user will be prompted to download this plug-in on initial use. Alternatively, it may be installed manually.

The ActiveX plug-in can be found at: <http://files.mps.com/GSA/Desktop/GPExport.zip>

Extract the contents of the zip file to your local computer. Within the GPExport folder there is a file called GPExportLib. Right click on the file GPExportLib and then select "Install".



Project Document Manager

To use ePM’s document manager, a client download of Project Document Manager (PDM) is required. PDM uses Microsoft’s “One Click” deployment for ease of installation. Navigate to the following URL to begin the install.

<https://epm.pbs.gsa.gov/pdm/pdm.application>

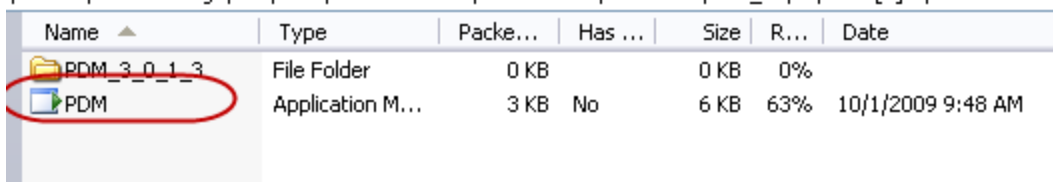
Note: you must have administrative rights to your desk top computer or be able to open the following registries that are required for the “One Click” deployment.

- HKEY_CLASSES_ROOT\PDM
- HKEY_CLASSES_ROOT\LMC

Alternatively, the client download is available at the following location:

http://files.mps.com/GSA/Desktop/PDM_Deployment.zip

Double click on the PDM file and the installation will begin. NOTE: you must have administrator privileges to be able to complete the install.

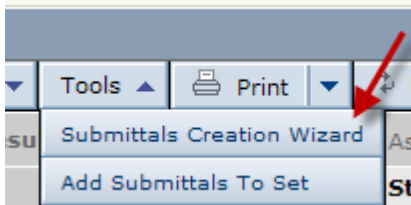


Name	Type	Packe...	Has ...	Size	R...	Date
PDM_3_0_1_3	File Folder	0 KB		0 KB	0%	
PDM	Application M...	3 KB	No	6 KB	63%	10/1/2009 9:48 AM

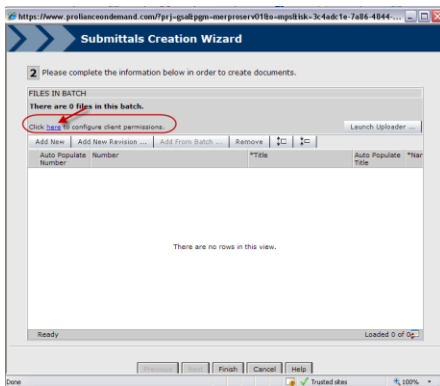
Batch Upload

The Submittals Creation Wizard within ePM enables the batch upload of multiple files from your local computer and creates new documents based upon those files. To enable this feature follow the instructions below the first time this option is selected.

1. Select the creation wizard from the Tools button in Proliance (example below is for Submittals)



2. Click the “Click here to configure client permissions” hyperlink to run the “CASClientConfiguration.msi” file. This starts the ePM Client Configuration Setup Wizard which configures your .NET security settings to allow file transfers.



3. After you run this wizard, you must close and reopen your browser for the changes to take effect.

NOTE: You must have Administrator permissions to your local computer to set these permissions.

Should the user not have administrative rights, the CASClientConfiguration.msi may be installed and registered through a group policy. The file is available at:

<http://files.mps.com/GSA/Desktop/CASClientConfiguration.zip>

Double click on the msi file to begin the installation.

